

The Great Grid Upgrade

Sea Link

Sea Link

Volume 2: Plans and Drawings

Document 2.5.3: Work Plans - Offshore

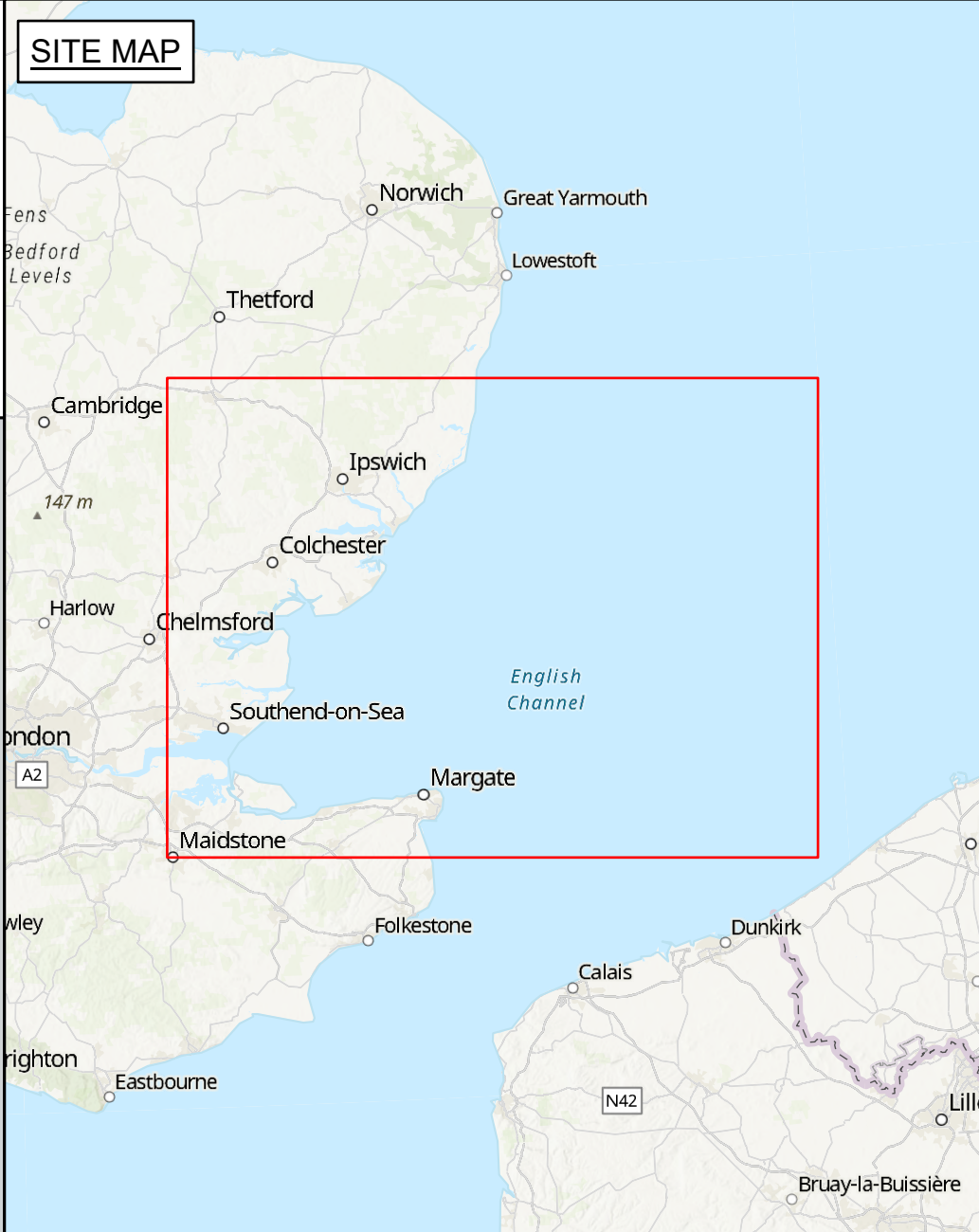
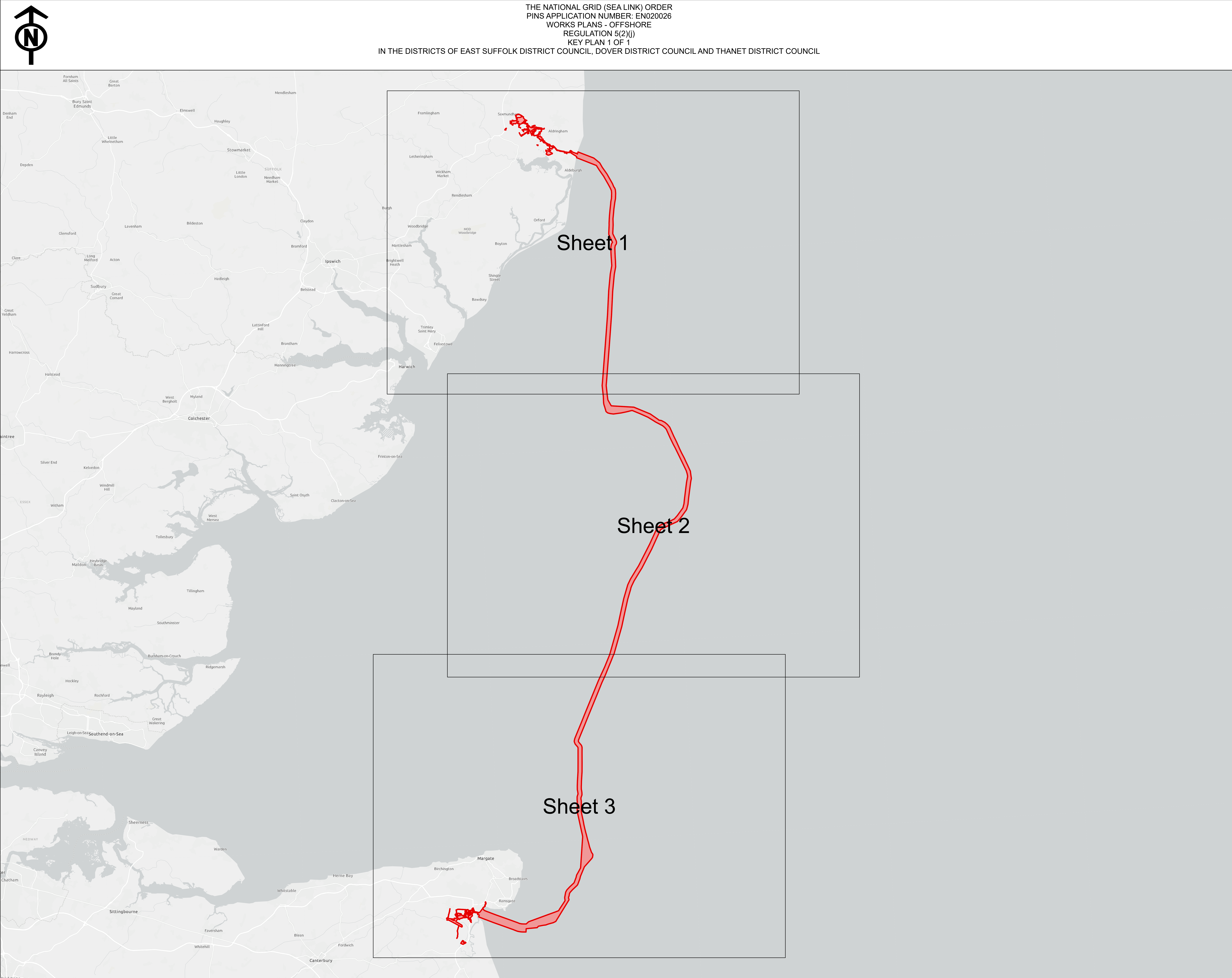
Planning Inspectorate Reference: EN020026

Version: A Version 2, change request
November 2025

Infrastructure Planning (Applications: Prescribed Forms and Procedure)
Regulations 2009 Regulation 5(2)(j)

nationalgrid

Page intentionally left blank



Application Document 2.5.3

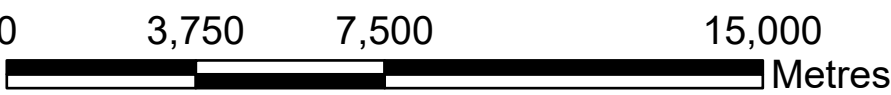
Legend

- Order Limits
 Detailed sheet

Notes

1. This plan is scaled to paper size A0, therefore any prints taken at smaller sizes will affect accuracy of the measurement units and should not be scaled against.
2. For further information on construction please refer to the construction section of the Environmental Statement.
3. Reference should be made to the Guide to the Plans (Document Ref 2.1) which provides further information on what the plans show.

Coordinate System: British National Grid
Sheet X Centroid Coordinate: N/A Sheet Y Centroid Coordinate: N/A



BACKGROUND MAPPING INFORMATION HAS BEEN REPRODUCED FROM THE ORDNANCE SURVEY BY PERMISSION OF ORDNANCE SURVEY OF THE CONTROLLER OF HIS MAJESTY'S STATIONERY OFFICE. CROWN COPYRIGHT ORDNANCE SURVEY © - 100024241. BLUESKY INTERNATIONAL LTD © NATIONAL GRID ELECTRICITY ESRI COMMUNITY MAPS CONTRIBUTORS, ESRI UK, ESRI, HERE, GARMIN, FOURSQUARE, GEOTECHNOLOGIES, INC, METINASA, USGS

| | | | | | |
|---------|----------|------------------------|-------|---------|----------|
| | | | | | |
| | | | | | |
| | | | | | |
| A ver.2 | Nov 25 | Change request version | JF | SC | JW |
| A | 06/03/25 | For Submission | JF | SC | JW |
| Issue | Date | Remarks | Drawn | Checked | Approved |

THE NATIONAL GRID (SEA LINK) ORDER
PINS APPLICATION NUMBER: EN020026
WORKS PLANS - OFFSHORE
REGULATION 5(2)(j)
KEY PLAN 1 OF 1

nationalgrid

Application Number

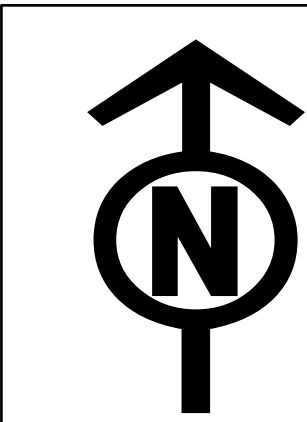
EN020026

National Grid Drawing Reference

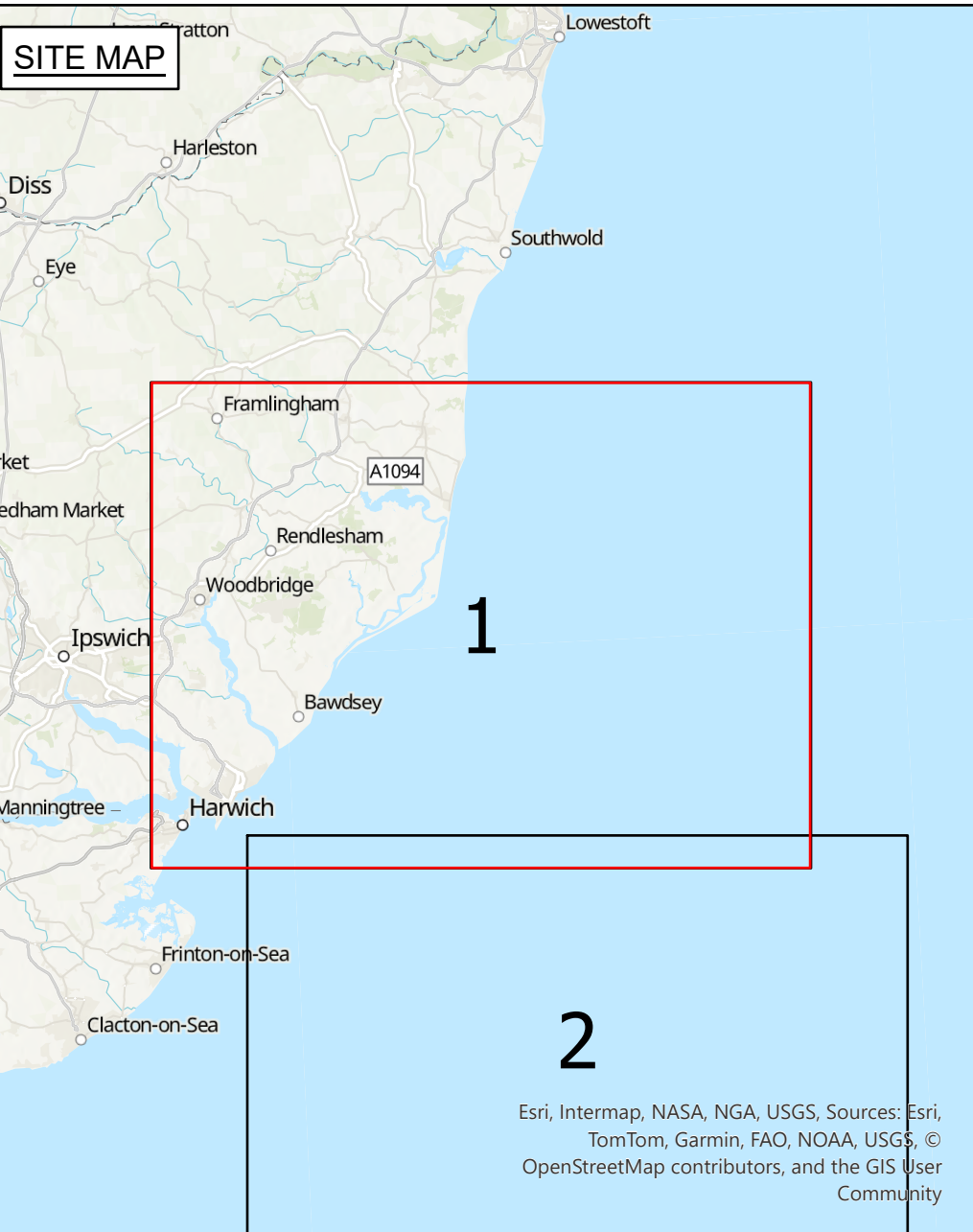
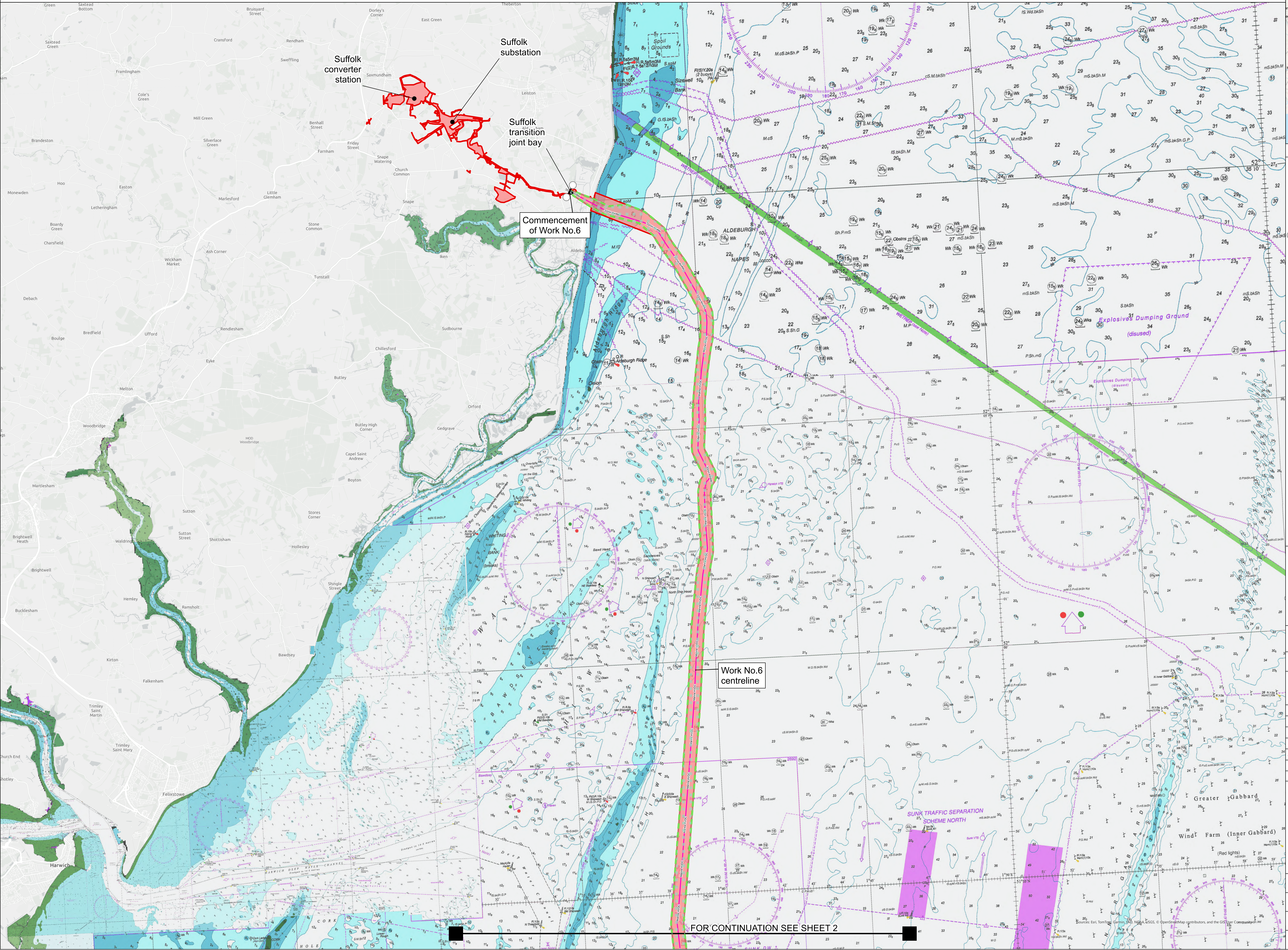
DCO

| <u>Scale</u> | <u>Sheet Size</u> | <u>Sheet</u> | <u>Issue</u> |
|--------------|-------------------|--------------|--------------|
|--------------|-------------------|--------------|--------------|

| | | | |
|-----------|----|--------------|---------|
| 1:150,000 | A0 | SHEET 1 OF 1 | A ver.2 |
|-----------|----|--------------|---------|



THE NATIONAL GRID (SEA LINK) ORDER
PINS APPLICATION NUMBER: EN020026
WORKS PLANS - OFFSHORE
REGULATION 5(2)(j)
SHEET 1 OF 3
IN THE DISTRICT OF EAST SUFFOLK DISTRICT COUNCIL



Application Document 2.5.3

- Legend**
- Order Limits
 - Work No. 6
 - Proposed marine High Voltage Direct Current (HVDC) cable alignment
 - Limit of deviation: High Voltage
 - Direct Current (HVDC) marine cables
 - Commencement of work

Notes

1. This plan is scaled at paper size A0, therefore any prints taken at smaller sizes will affect accuracy of the measurement units and should not be scaled against.
2. These plans show the Order Limits and potential locations for the works. Due to the need for future flexibility, National Grid will be applying for Order Limits and Limits of Deviation within its Development Consent Order, within which any final alignment would lie. Therefore the cable alignment, converter stations, substations and pylon locations should be treated as indicative only.
3. For further information on construction please refer to the construction section of the Environmental Statement.
4. Reference should be made to the Guide to the Plans (Document Ref 2.1) which provides further information on what the plans show.

Coordinate System: British National Grid
Sheet X Centroid Coordinate: 648888 25 Sheet Y Centroid Coordinate: 247191 86
A transformation from WGS 1984 to British National Grid coordinate system has been applied to marine basemapping.



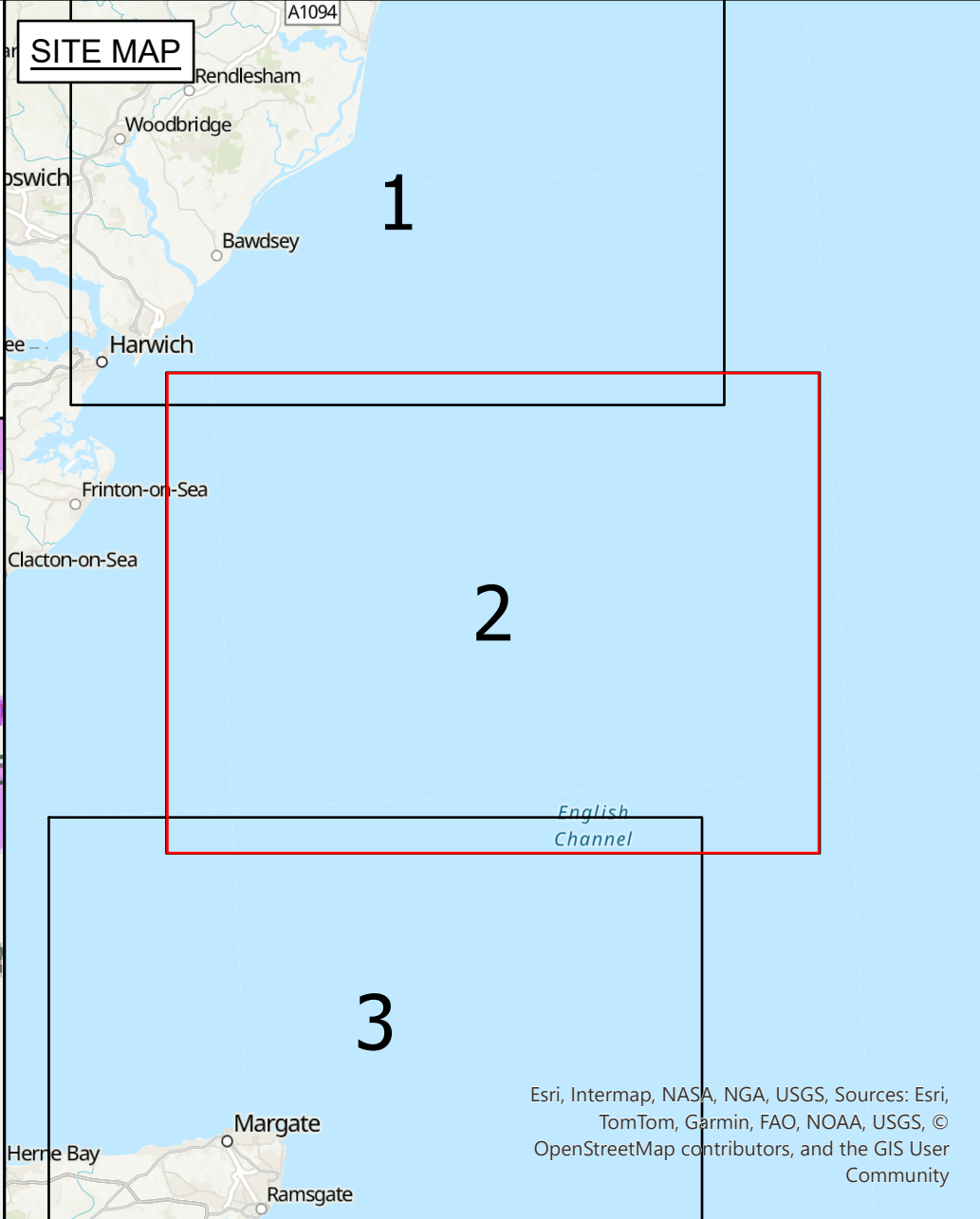
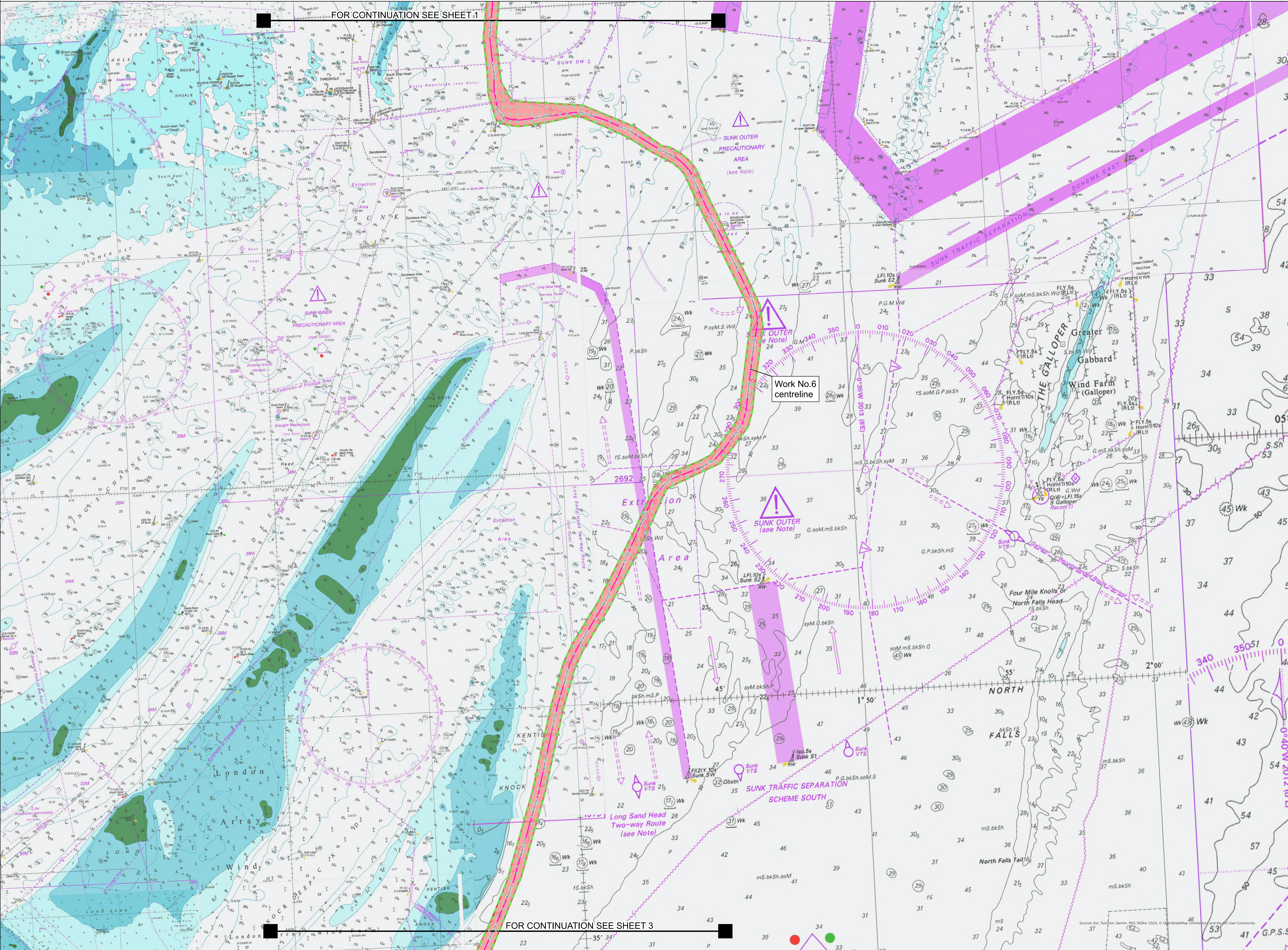
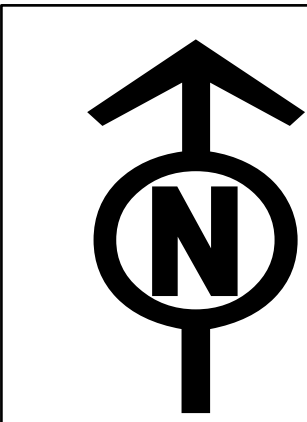
BACKGROUND MAPPING INFORMATION HAS BEEN REPRODUCED FROM THE UK HYDROGRAPHIC OFFICE
© BRITISH CROWN AND OCEANWISE, 2025. ALL RIGHTS RESERVED. LICENSE NUMBER EMS-EX01-882114. NOT TO BE USED FOR NAVIGATION
© NATIONAL GRID ELECTRICITY

| | | | | | |
|---------|----------|------------------------|-------|---------|----------|
| | | | | | |
| | | | | | |
| | | | | | |
| A ver.2 | Nov 25 | Change request version | JF | SC | JW |
| A | 06/03/25 | For Submission | JF | SC | JW |
| Issue | Date | Remarks | Drawn | Checked | Approved |

Title

THE NATIONAL GRID (SEA LINK) ORDER
PINS APPLICATION NUMBER: EN020026
WORKS PLANS - OFFSHORE
REGULATION 5(2)(j)
SHEET 1 OF 3

| | | | |
|---------------------------------|------------|--------------|---------|
| nationalgrid | | | |
| Application Number | | | |
| EN020026 | | | |
| National Grid Drawing Reference | | | |
| DCO/MWK/PS/0414 | | | |
| Scale | Sheet Size | Sheet | Issue |
| 1:50,000 | A0 | SHEET 1 OF 3 | A ver.2 |



Application Document 2.5.3

- Legend**
- Order Limits
 - Work No.6
 - Proposed marine High Voltage Direct Current (HVDC) cable alignment
 - Limit of deviation: High Voltage
 - Direct Current (HVDC) marine cables

Notes

1. This plan is scaled at paper size A0, therefore any prints taken at smaller sizes will affect accuracy of the measurement units and should not be scaled against.
2. These plans show the Order Limits and potential locations for the works.
Due to the need for future flexibility, National Grid will be applying for Order Limits and Limits of Deviation within its Development Consent Order, within which any final alignment would lie. Therefore the cable alignment, converter stations, substations and pylon locations should be treated as indicative only.
3. For further information on construction please refer to the construction section of the Environmental Statement.
4. Reference should be made to the Guide to the Plans (Document Ref 2.1) which provides further information on what the plans show.

Coordinate System: British National Grid
Sheet X Centroid Coordinate: 656416.31 Sheet Y Centroid Coordinate: 211918.8
A transformation from WGS 1984 to British National Grid coordinate system has been applied to marine basemapping.

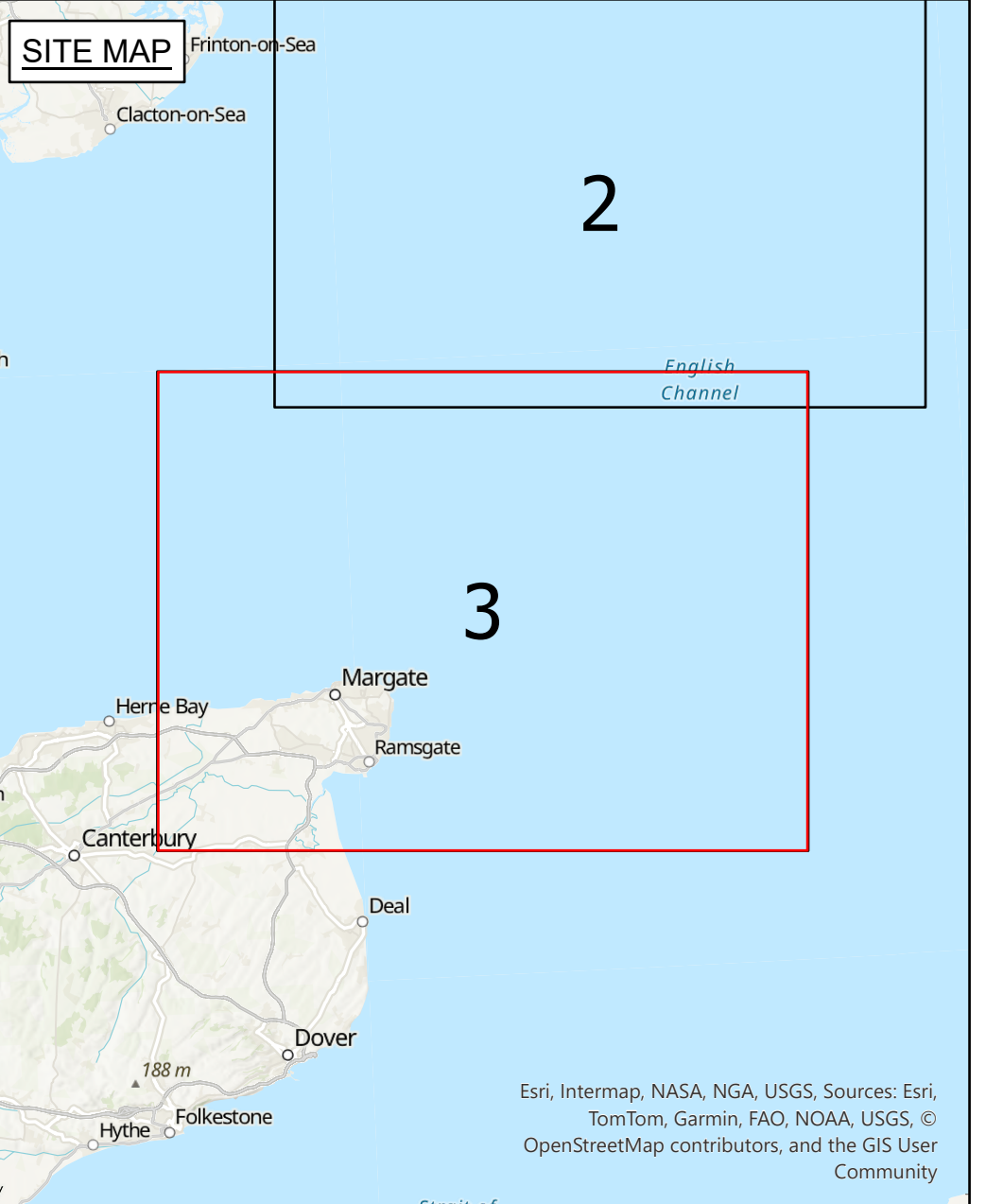
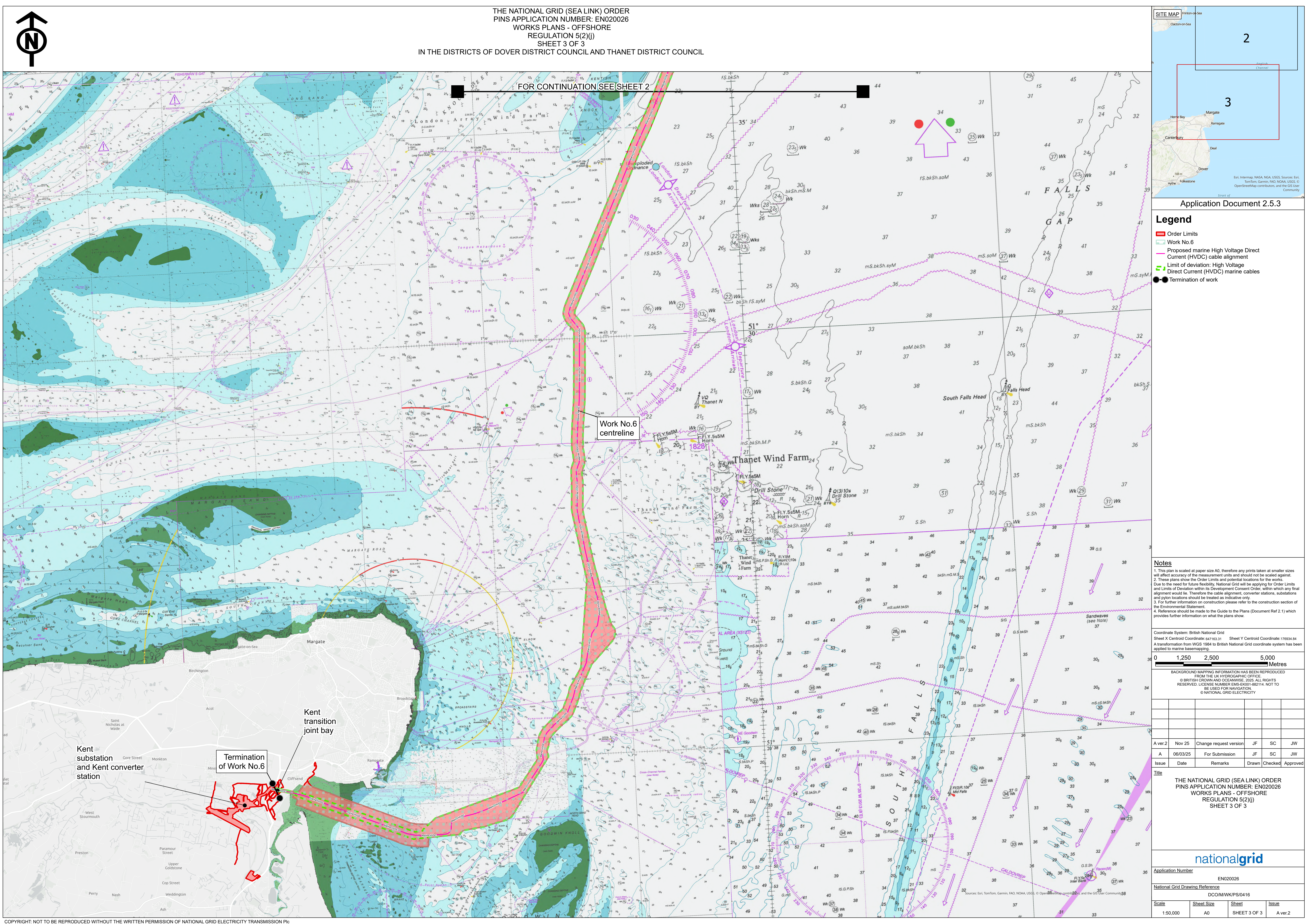
0 1,250 2,500 5,000
Metres

BACKGROUND MAPPING INFORMATION HAS BEEN REPRODUCED FROM THE UK HYDROGRAPHIC OFFICE
© BRITISH CROWN AND OCEANWISE, 2025. ALL RIGHTS RESERVED. LICENSE NUMBER EMS-EX01-882114. NOT TO BE USED FOR NAVIGATION.
© NATIONAL GRID ELECTRICITY

| Issue | Date | Remarks | Drawn | Checked | Approved |
|-------|----------|----------------|-------|---------|----------|
| A | 06/03/25 | For Submission | JF | SC | JW |

THE NATIONAL GRID (SEA LINK) ORDER
PINS APPLICATION NUMBER: EN020026
WORKS PLANS - OFFSHORE
REGULATION 5(2)(J)
SHEET 2 OF 3

| | | | |
|---------------------------------|------------|--------------|-------|
| nationalgrid | | | |
| Application Number | | | |
| EN020026 | | | |
| National Grid Drawing Reference | | | |
| DCO/MW/KP/PS/0415 | | | |
| Scale | Sheet Size | Sheet | Issue |
| 1:50,000 | A0 | SHEET 2 OF 3 | A |



Legend

- Order Limits
- Work No.6
- Proposed marine High Voltage Direct Current (HVDC) cable alignment
- Limit of deviation: High Voltage
- Direct Current (HVDC) marine cables
- Termination of work

Notes

1. This plan is scaled at paper size A0, therefore any prints taken at smaller sizes will affect accuracy of the measurement units and should not be scaled against.
2. These plans show the Order Limits and potential locations for the works.
Due to the need for future flexibility, National Grid will be applying for Order Limits and Limits of Deviation within its Development Consent Order, within which any final alignment would lie. Therefore the cable alignment, converter stations, substations and pylon locations should be treated as indicative only.
3. For further information on construction please refer to the construction section of the Environmental Statement.
4. Reference should be made to the Guide to the Plans (Document Ref 2.1) which provides further information on what the plans show.

Coordinate System: British National Grid
Sheet X Centroid Coordinate: 647163.31 Sheet Y Centroid Coordinate: 176934.84
A transformation from WGS 1984 to British National Grid coordinate system has been applied to marine basemapping.

0 1,250 2,500 5,000 Metres

BACKGROUND MAPPING INFORMATION HAS BEEN REPRODUCED FROM THE UK HYDROGRAPHIC OFFICE
© BRITISH CROWN AND OCEANWISE, 2025. ALL RIGHTS RESERVED. LICENSE NUMBER EMS-EX001-882114. NOT TO BE USED FOR NAVIGATION
© NATIONAL GRID ELECTRICITY

| | | | | | |
|---------|----------|------------------------|-------|---------|----------|
| | | | | | |
| | | | | | |
| | | | | | |
| A ver.2 | Nov 25 | Change request version | JF | SC | JW |
| A | 06/03/25 | For Submission | JF | SC | JW |
| Issue | Date | Remarks | Drawn | Checked | Approved |

THE NATIONAL GRID (SEA LINK) ORDER
PINS APPLICATION NUMBER: EN020026
WORKS PLANS - OFFSHORE
REGULATION 5(2)(j)
SHEET 3 OF 3